

Name: _____

Tie, Tongue, and Slur

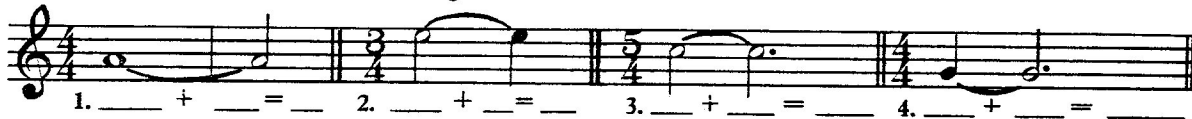
Date: _____ 7

A *tie* is a curved line that connects two or more notes of the same pitch. When two notes are tied together, you hold the pitch for the length of both notes:



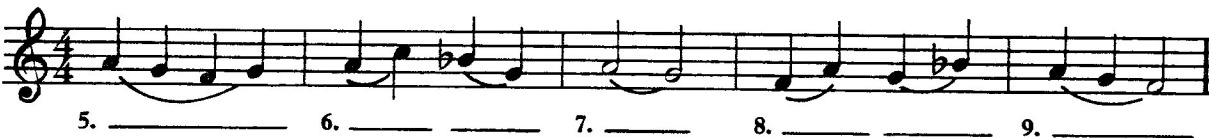
Hold for two beats.

A. Add the beats to show how long each of these tied notes will be held for:



A *slur* is a curved line that connects different notes. Always tongue the first note, and play the other notes without tonguing.

B. In the examples below, write "T" under the note that is to be tongued, and "slur" under the notes that should not be tongued.



Review:

1. A _____ connects two or more notes of the same pitch.
2. A _____ connects different notes.
3. A slur means to play without _____.
4. Always _____ the first note of a slur.
5. A tie means to hold the pitch for the length of _____ notes.

Optional Activity:

1. Have a trumpet player play the slurring examples. Listen carefully to see if the tonguing and slurring are correct.